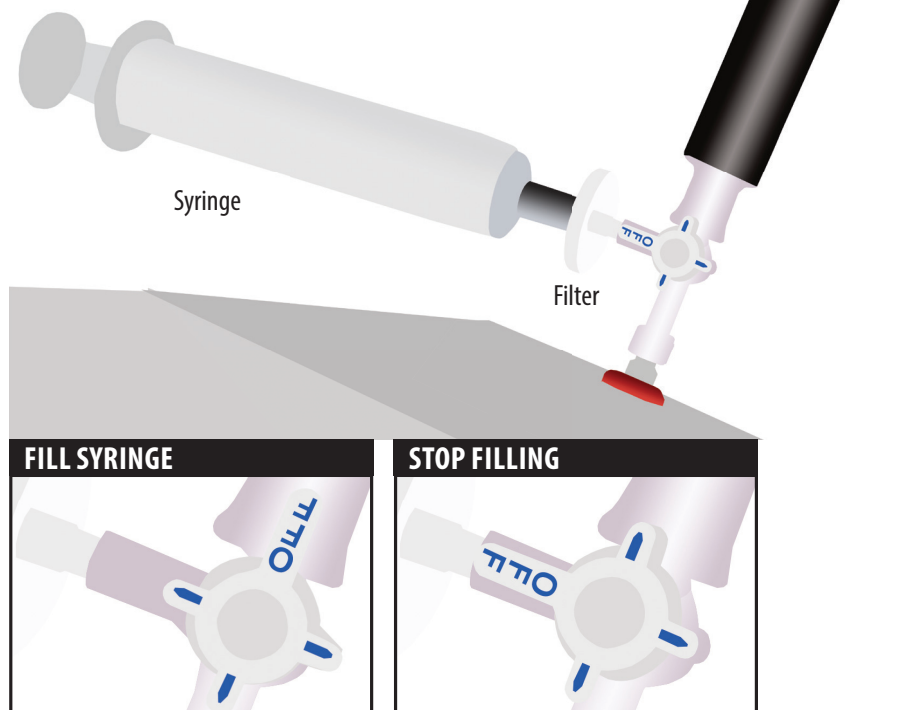


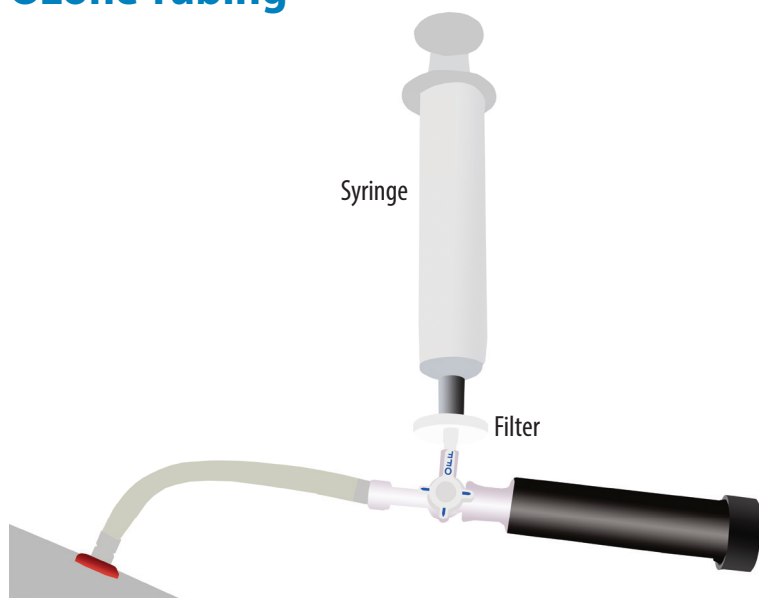
Ozone Syringe Filling System

Connected Directly to Ozone Generator



1. Attach Syringe Filling System directly to the Ozone Out port on your ozone generator.
2. Attach syringe to side port of the Filling System. Use a filter if needed (shown).
3. Make sure the Off is pointed toward the syringe until ready to fill. Turn the Off toward the destruct to start filling.
4. Turn the Off back toward the syringe when filling is done.

Connected Directly to Ozone Tubing



1. Attach Syringe Filling System to a piece of tubing with Luer locks. Connect the other side to the Ozone Out port of the ozone generator.
2. Attach syringe to side port of the Filling System. Use a filter if needed (shown).
3. Make sure the Off is pointed toward the syringe until ready to fill. Turn the Off toward the destruct to start filling.
4. Turn the Off back toward the syringe when filling is done.